

## VACUUM SINGLE CHAMBER MACHINES

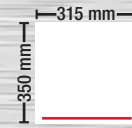


**CM1700L**

**CM300**

Machine Packaging Type **VACUUM**

### Chamber Dimensions



SINGLE SEAL BAR  
**CM300**



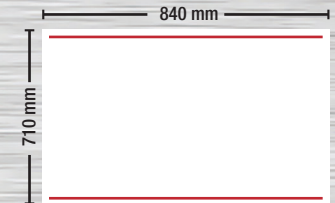
DOUBLE SEAL BAR  
**CM360LR**



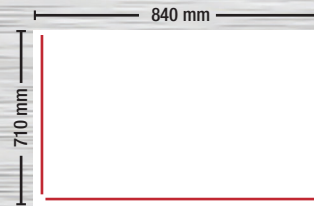
SINGLE SEAL BAR  
**CM430**



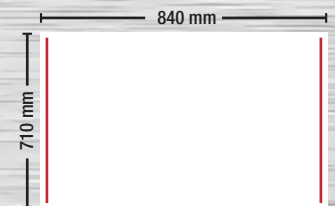
DOUBLE SEAL BAR  
**CM610FB**



DOUBLE SEAL BAR  
**CM800FB**



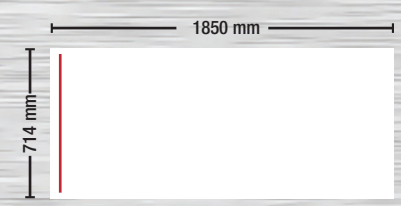
DOUBLE SEAL BAR  
**CM800L**



DOUBLE SEAL BAR  
**CM800LR**



DOUBLE SEAL BAR  
**CM1500**



SINGLE SEAL BAR - AUTOMATIC BELT  
**CM1700L**

### Perfect For Packaging:

- Meats
- Cheeses
- Sauces
- Consumer Goods



## FEATURES

**Packaging Plus Vacuum Chamber Machines** are constructed with .25 inch thick stainless steel chambers. This is twice as thick as our competitors. Our machines use include solid UHMW filler boards and Busch rotary vane vacuum pumps. We use durable, high-quality brass vacuum vent valves. All our chamber machines are designed for easy cleaning without bacteria harbor points.

## BENEFITS

- Simple to operate microcomputer control system
- Compact design ideal for small floor plans
- Digital controls with up to 10 storable programs
- 2 operation modes (vacuum & gas flush)
- Excellent seal system
- 12-month warranty
- Operators manual & spare parts kit included

MODEL	CM300	CM360LR	CM430	CM610FB	CM800FB	CM800L	CM800LR	CM1500	CM1700L
-------	-------	---------	-------	---------	---------	--------	---------	--------	---------

### Chamber Dimensions

Width	315 mm 12.4 in	600 mm 23.6 in	435 mm 17.1 in	638 mm 25 in	840 mm 33 in	840 mm 33 in	840 mm 33 in	1438 mm 56.6 in	1850 mm 72.8 in
Depth	350 mm 13.7 in	376 mm 14.8 in	420 mm 16.5 in	482 mm 19 in	710 mm 27.9 in	710 mm 27.9 in	710 mm 27.9 in	677 mm 26.6 in	714 mm 28 in
Height	105 mm 4.1 in	134 mm 5.6 in	170 mm 6.6 in	155 mm 6 in	230 mm 9 in	230 mm 9 in	230 mm 9 in	240 mm 9.4 in	260 mm 10.2 in

### Machine Dimensions

Width	360 mm 14.2 in	665 mm 25.7 in	490 mm 19.2 in	700 mm 27.5 in	920 mm 36.2 in	920 mm 36.2 in	920 mm 36.2 in	1500 mm 59 in	2300 mm 90.5 in
Depth	460 mm 18.1 in	495 mm 19.4 in	540 mm 21.2 in	570 mm 22.5 in	800 mm 31.4 in	800 mm 31.4 in	800 mm 31.4 in	746 mm 29.3 in	820 mm 32.2 in
Height	460 mm 18.1 in	480 mm 18.8 in	510 mm 20 in	975 mm 38 in	1080 mm 42.5 in	1080 mm 42.5 in	1080 mm 42.5 in	1107 mm 43.5 in	1800 mm 70.9 in

SPECS	CM300	CM360LR	CM430	CM610FB	CM800FB	CM800L	CM800LR	CM1500	CM1700L
Machine Material	All Stainless Steel								
Seal bars	1	2	1	2	2	2	2	2	2
Seal bar Length	300 mm 11.8 in	360 mm 14.7 in	420 mm 16.5 in	610 mm 24 in	800 mm 31.4 in	610 (l) 800 (f) mm 24 (l) 31.4 (f) in	640 mm 25.1 in	610 mm 24 in	580 mm 22.8 in
Distance Between Seal bars	N/A	470 mm 18.5 in	N/A	360 mm 14.7 in	600 mm 23.6 in	N/A	750 mm 29.5 in	1270 mm 50 in	1580 mm 62.2 in
Machine Controls	Digital with up to 10 Storable Programs								
Weight	42 kg / 93 lbs	81 kg 178 lbs	87 kg 191 lbs	155 kg 70 lbs	300 kg 600 lbs	300 kg 600 lbs	300 kg 600 lbs	571 kg 1258 lbs	786 kg 1732 lbs
Gas Flush	Optional Gas Flush								
Bi-Active Sealing	N/A			Optional Bi-Active Sealing					
Electrical Connection	110 V 1 ph/60hz (optional 230 V 1 ph/50hz)				220 V 3 ph/60hz (optional 400 V 3 ph/50hz)				
Electrical Load	1.8 kW 20 A	1.8 kW 20 A	1.8 kW 20 A	3.1 kW 30 A	5.2 kW 20 A	5.2 kW 20 A	5.2 kW 20 A	11.4 kW 40 A	11.4 kW 40 A
Air Pressure Req.	N/A				Positive Air Optional	Positive Air Optional	Positive Air Optional	37L/Cycle 2-3 HP	37L/Cycle 2-3 HP

Tell us your vision and we will build a custom solution for you! Email us at [Sales@VC999.com](mailto:Sales@VC999.com)

**UNITED STATES:** [Sales@VC999.com](mailto:Sales@VC999.com)  
Kansas City - 1 800-728-2999

**CENTRAL/SOUTH AMERICA:** [Sales.Americas@VC999.com](mailto:Sales.Americas@VC999.com)  
49 162 24 34 627

**COLOMBIA:** [Sales.Colombia@VC999.com](mailto:Sales.Colombia@VC999.com)  
57 (1) 8966546 or 8966798

**CANADA:** [Sales.Canada@VC999.com](mailto:Sales.Canada@VC999.com)  
Montreal - 1 819-395-4555  
Toronto - 1 416-254-0099

**MEXICO:** [Sales.Mexico@VC999.com](mailto:Sales.Mexico@VC999.com)  
Monterrey - 52 81 8361 3178  
Mexico City - 52 55 5876 7784

**VC999**<sup>®</sup>  
[www.VC999.com](http://www.VC999.com)

**PACKAGING**<sub>plus</sub><sup>+</sup>  
[www.pack-plus.com](http://www.pack-plus.com)